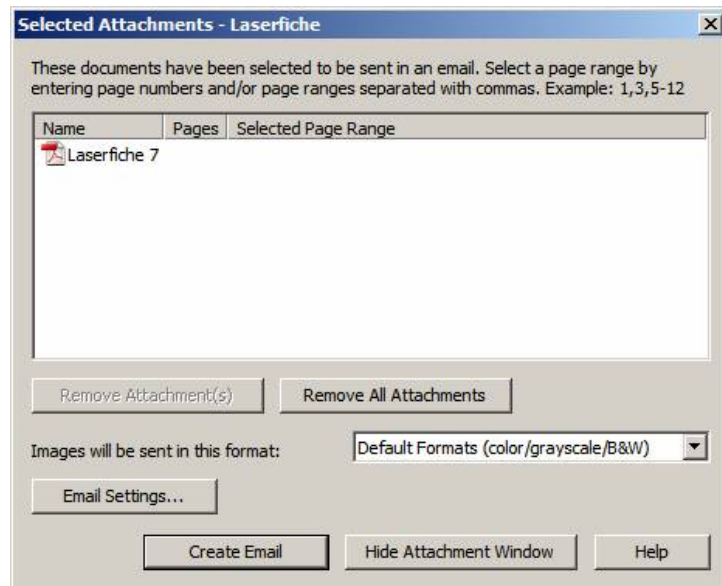
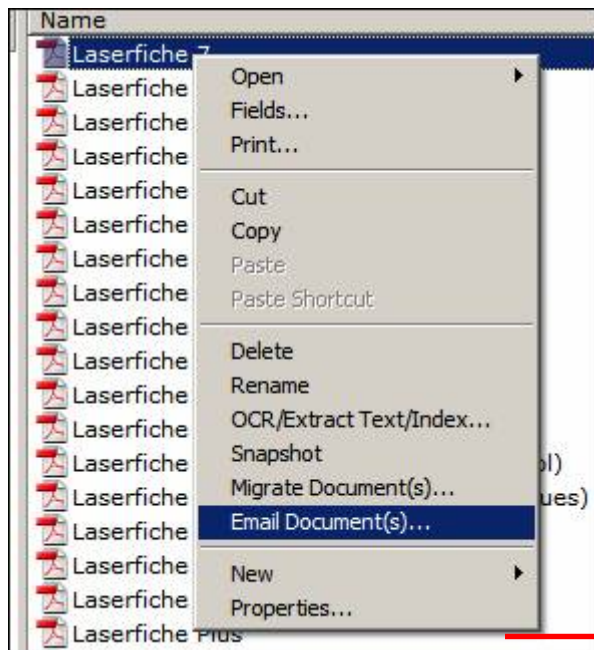


## Attach Plus & Laserfiche

The Laserfiche email Plug-in sends a MAPI command to Attach Plus. See below for how the procedure works.



**Step 1. Right Click document, click Email Documents**



**Step 2. After clicking on Create Email, Attach Plus comes into play. Works great with any document format for creating 128-bit encrypted PDFs. Automatically places attachment in email message.**

**Note:** If Multiple documents are attached, Merge Multiple PDF and Bookmarks checkboxes will appear.

